

Customer :

customer

Customer part :

customer part

Comment :

Comment

S1=0.04

S2=0.09

Tmax=305

Tp S2=344.0

PI=0.28

HI=31

Sample =16507.0

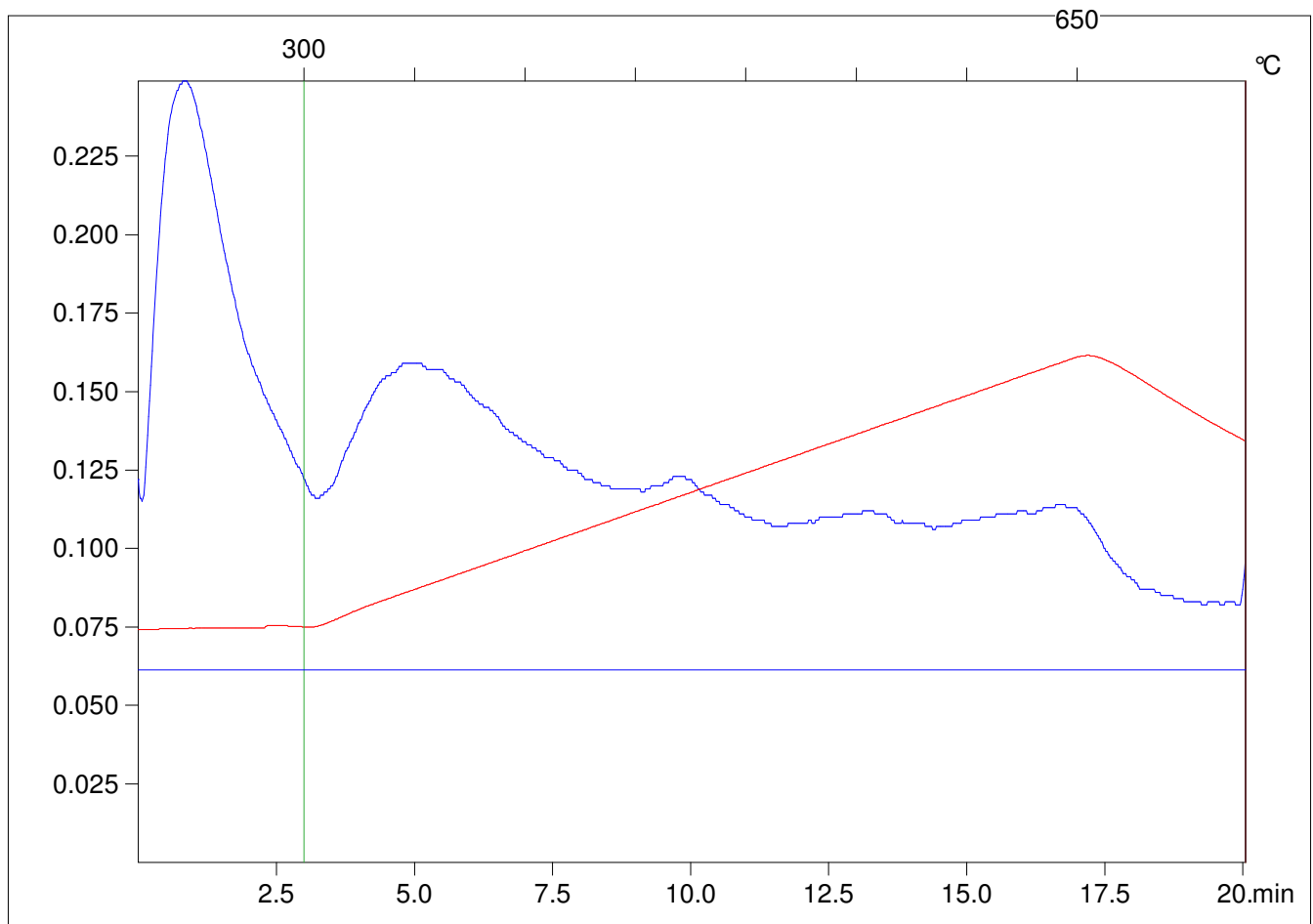
Method =Bulk Rock

Cycle=Basic

KFID(10\*9)=1167

Qty =70.7

TOC=0.29



C:\VINC\PK141021\PK023.R00 : FID pyrolysis graphic

State

Pyro Status

Oxi Status